

How discard research underpins high survival exemptions



S. Uhlmann, T. Catchpole
European Parliament, Brussels, June 26, 2018

Content

- Description of the evidence
- Evidence collected so far
- Review of the evidence
- Implications for (ICES) advice

Description of the evidence

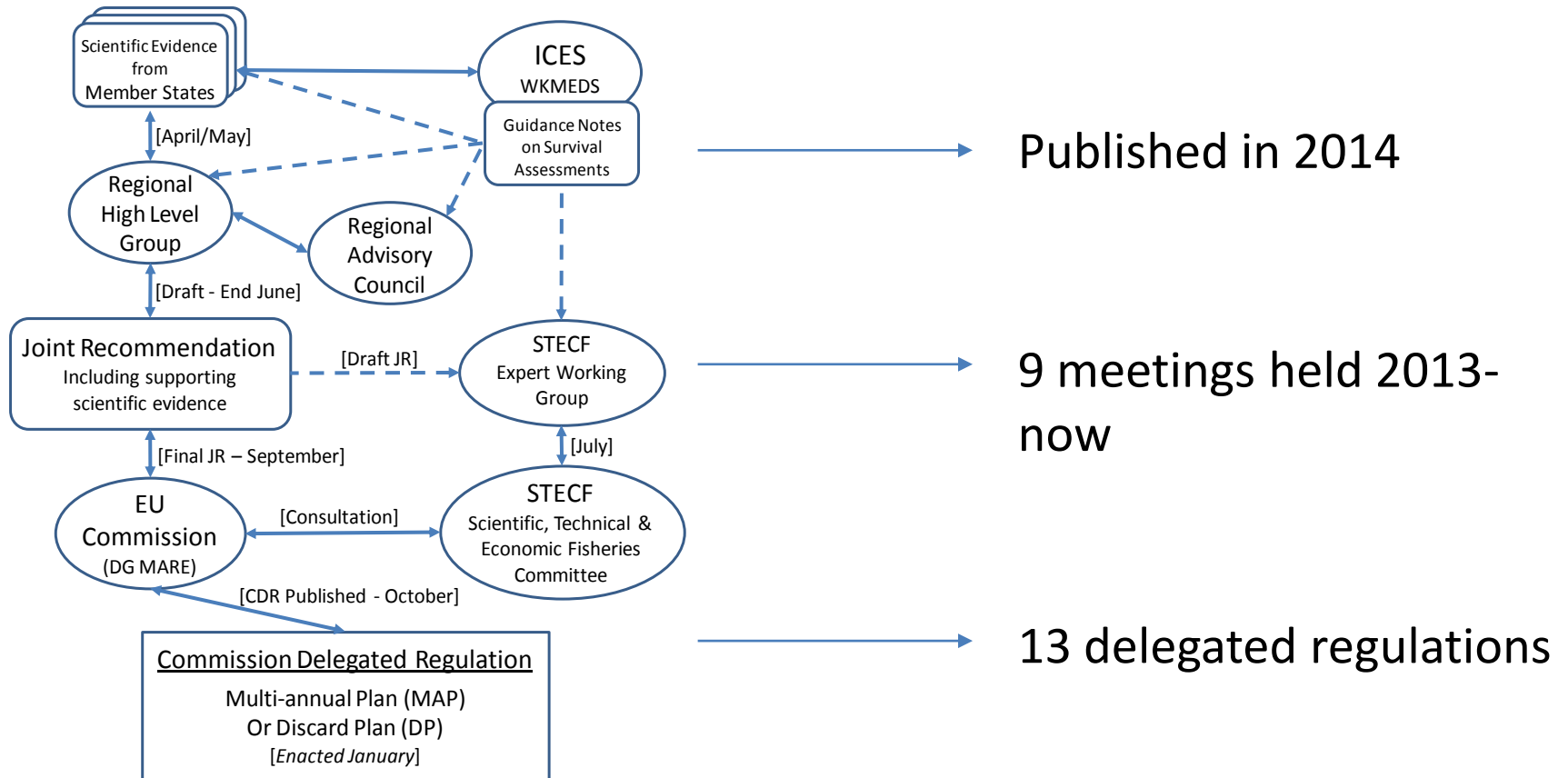
Details of proposed exemptions under the high survival provision provided by regional managers in multiannual plans or Discard Plans

Scientific Technical and Economic Committee for Fisheries (STECF) provided guidance on discard plans

Three types of information to include in the Discard Plan:

- *A description of the management unit (fishery) and the species for which the exemption is being sought*
- *A description of the available scientific evidence on discard survival rates relevant to the management unit*
- *A description of how representative the survival data are for the management unit and how the exemption will be managed*

Description of the evidence



An **overview of the process** (including approximate timetable) for drafting, consultation and approval of a **Joint Recommendation** for an **exemption to the Landing Obligation** (from Rihan et al., in prep.)

Evidence collected so far

- >20 studies in 11 member states and Turkey
- >20 species of fish and crustaceans
- ICES guidance notes used and followed

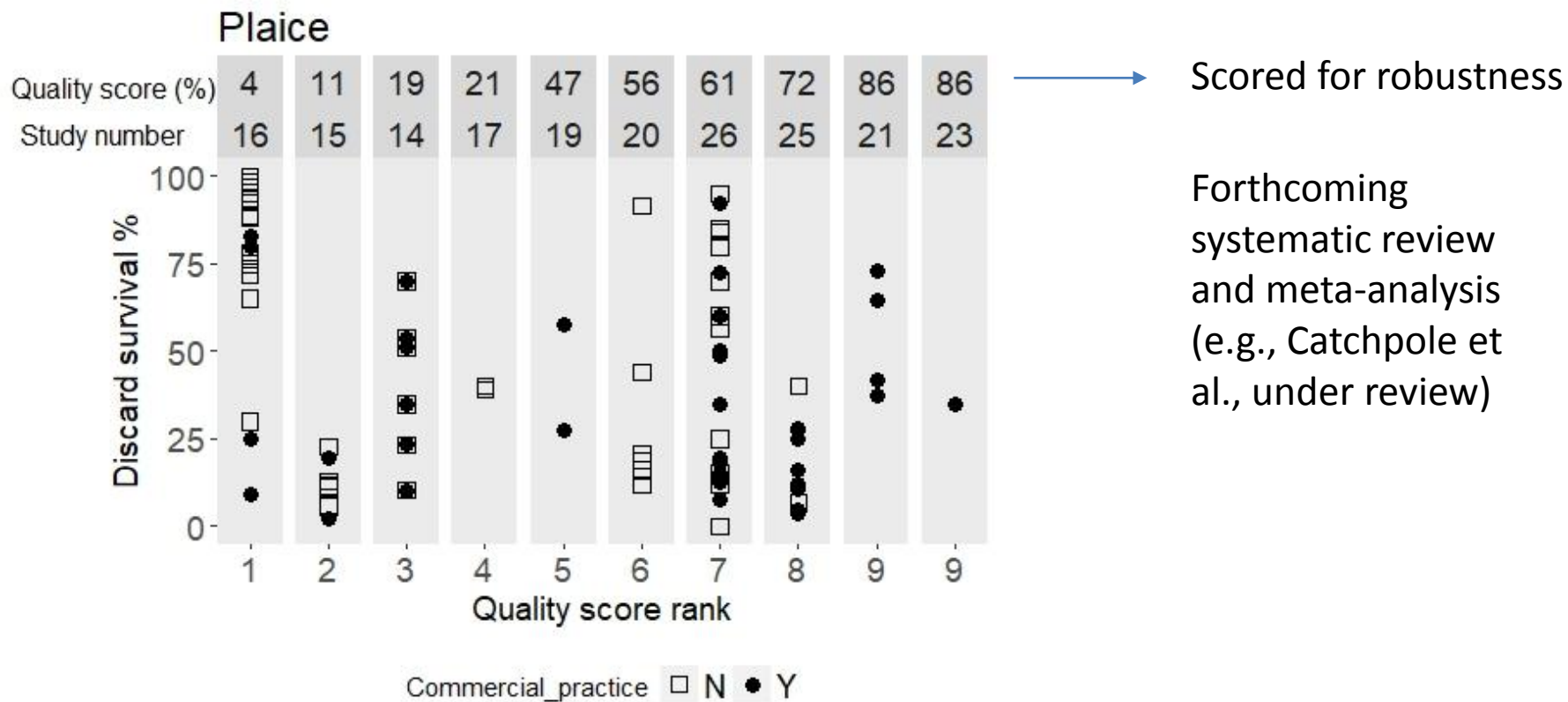


Vitality assessment



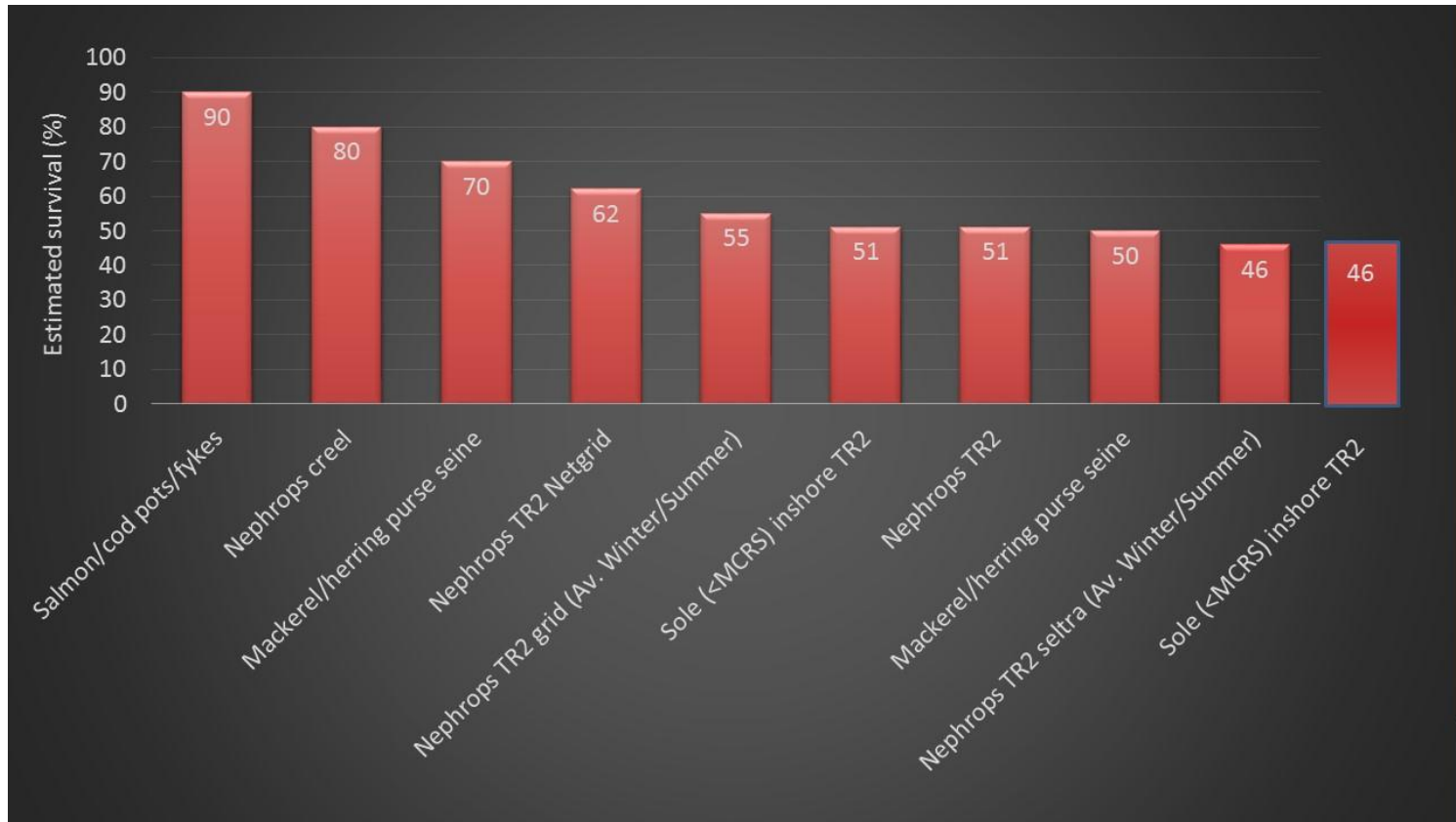
Captive monitoring

Evidence collected so far

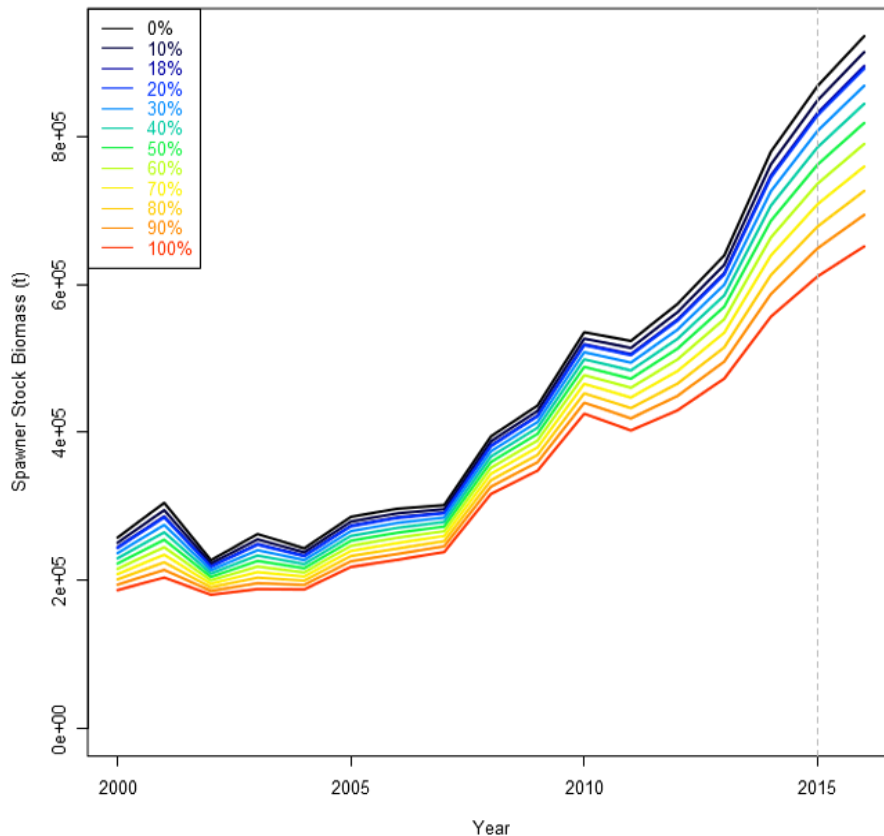


Estimates of % discard survival (i.e., plaiice) per study ranked by its quality score (from Catchpole et al., under review)

Review of the evidence



Implications for (ICES) advice



Challenges include:

- Catch data collection (discards turned into more categories)
- Catch advice and forecasting methods
- High survival vs selectivity
- Significant improvements to stock assessments when empirical survival data are considered?

North Sea cod

(From E. Kirkegaard, WGCHAIRS, 2018)



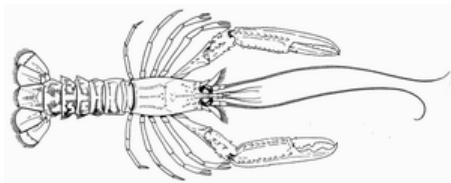
Basis	Total catch (2018)	Wanted catch* (2018)	Unwanted catch* (2018)	F_{total} (2018)	F_{wanted} (2018)	$F_{unwanted}$ (2018)	SSB (2019)	% SSB change **	% TAC change ***
ICES advice basis									
MSY approach: F_{MSY}	59888	41309	18579	0.31	0.20	0.108	216473	6.0	-12.2

Norway lobster in Division 7.a, Functional Unit 15 (Irish Sea, West)

Landing obligation:

Creel fisheries are exempted

De minimis exemption - 6% discard rate by weight for the trawl fishery in 2018 (reduced from 7% in 2016 and 2017).



Catch options for 2018 assuming discarding continues at the recent average rate.

Basis	Total catch	Dead removals	Landings	Dead discards	Surviving discards	Harvest rate*
	L+DD+SD	L+DD	L	DD	SD	for L+DD
ICES advice basis						
MSY approach; F_{MSY}	11807	11590	9630	1959	218	18.2%
Other options						
F_{2016}	11483	11271	9366	1906	212	17.7%

Thank you



<https://www.youtube.com/watch?v=0uAVx0z2u-M>

<https://www.youtube.com/watch?v=pXFiwpNxdwE>

<https://www.facebook.com/ILVOinnoverendvissen>

Flanders Research Institute for
Agriculture, Fisheries and Food
Ankerstraat 1

8400 Oostende – Belgium

T + 32 (0)59 56 98 75

F +32 (0)59 33 06 29

dier@ilvo.vlaanderen.be

www.ilvo.vlaanderen.be