

# A biorefinery and value chain approach

The primary sector as a strategic partner

Alarik Sandrup

Director Public and Regulatory Affairs, Lantmännen & President, ePURE

# Overview

- Introduction to ePURE and Lantmännen
- A biorefinery as an example of bioeconomy IRL
- Ethanol and protein feed production in the EU: -  
made in Europe, from Europe
- Biofuels are the main alternative to fossil fuels, but all  
sustainable alternatives are needed
- Thinking local, empowering EU climate ambitions,  
food security and strategic supply chain

# ePURE: the voice of the European ethanol industry

- 36 member companies, including e.g. cooperatives, refiners and bio-tech companies
- 50 biorefineries in 16 EU Member States
- Our members use 99% European feedstock to produce ethanol with an average of 71% GHG savings

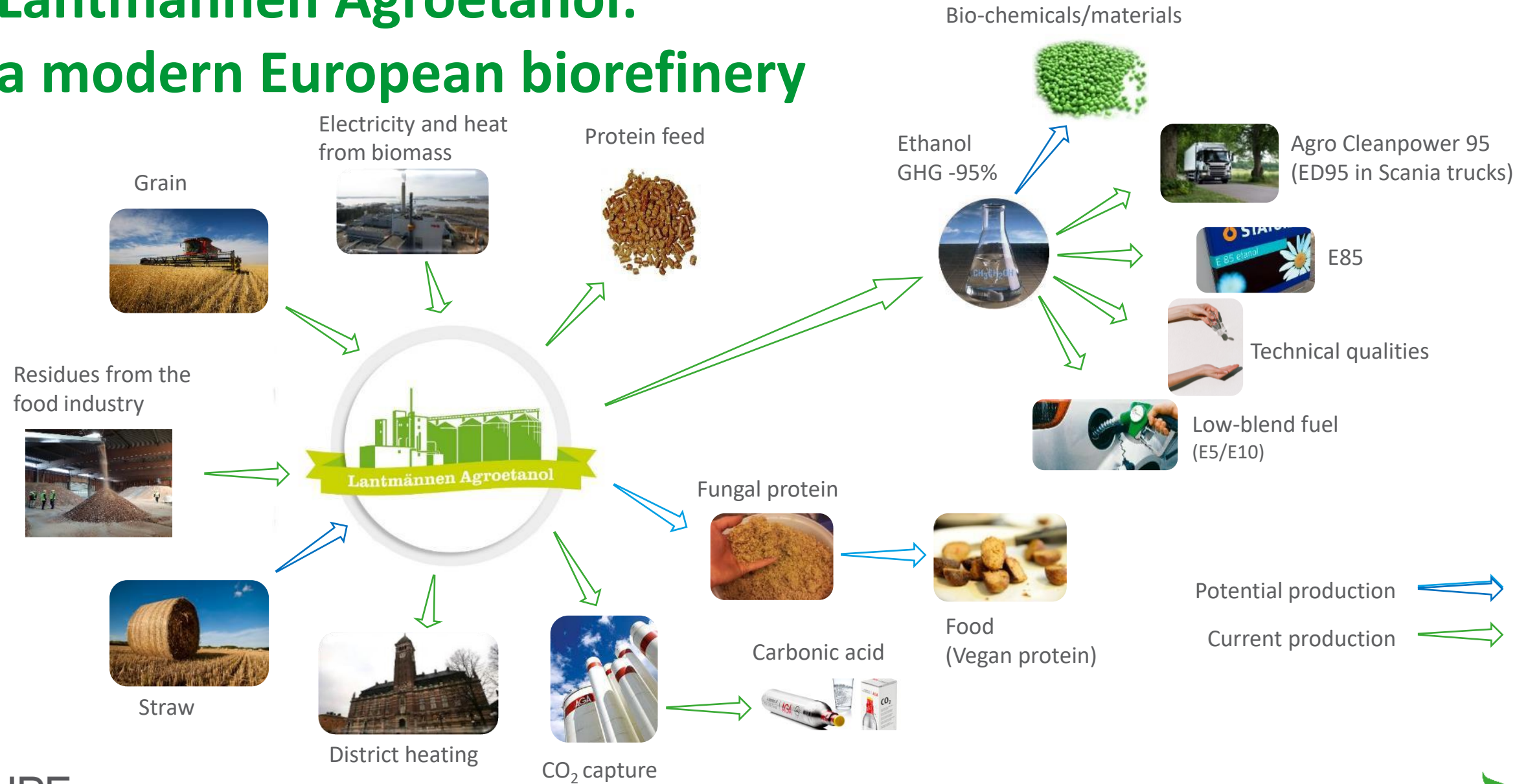


# Lantmännen: A farmers' cooperative in the forefront towards a circular bioeconomy

- Lantmännen has operations in agriculture, machinery, bioenergy and food
- We are owned by 20,000 Swedish farmers, have 10,000 employees in +20 countries and a turnover of EUR 5 billion
- Lantmännen is the largest bioenergy company in Sweden, producing bioheat, solid biofuels and ethanol
- 'Farm to Fork' has been our motto for a long time, we cover many value chains from e.g. plant breeding and digitalization to the production of food and bioenergy

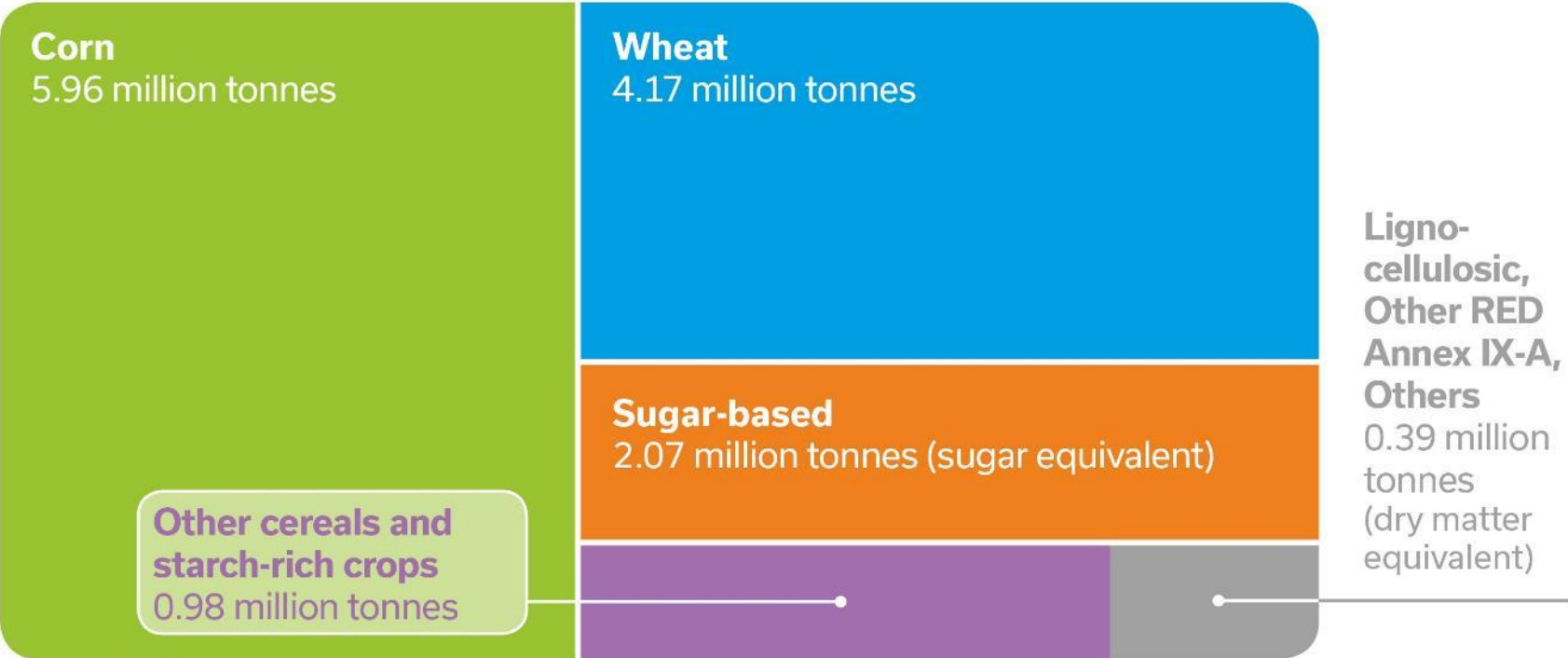


# Lantmännen Agroetanol: a modern European biorefinery



# ePURE ethanol: Made in/from Europe

## Feedstock used to produce renewable ethanol

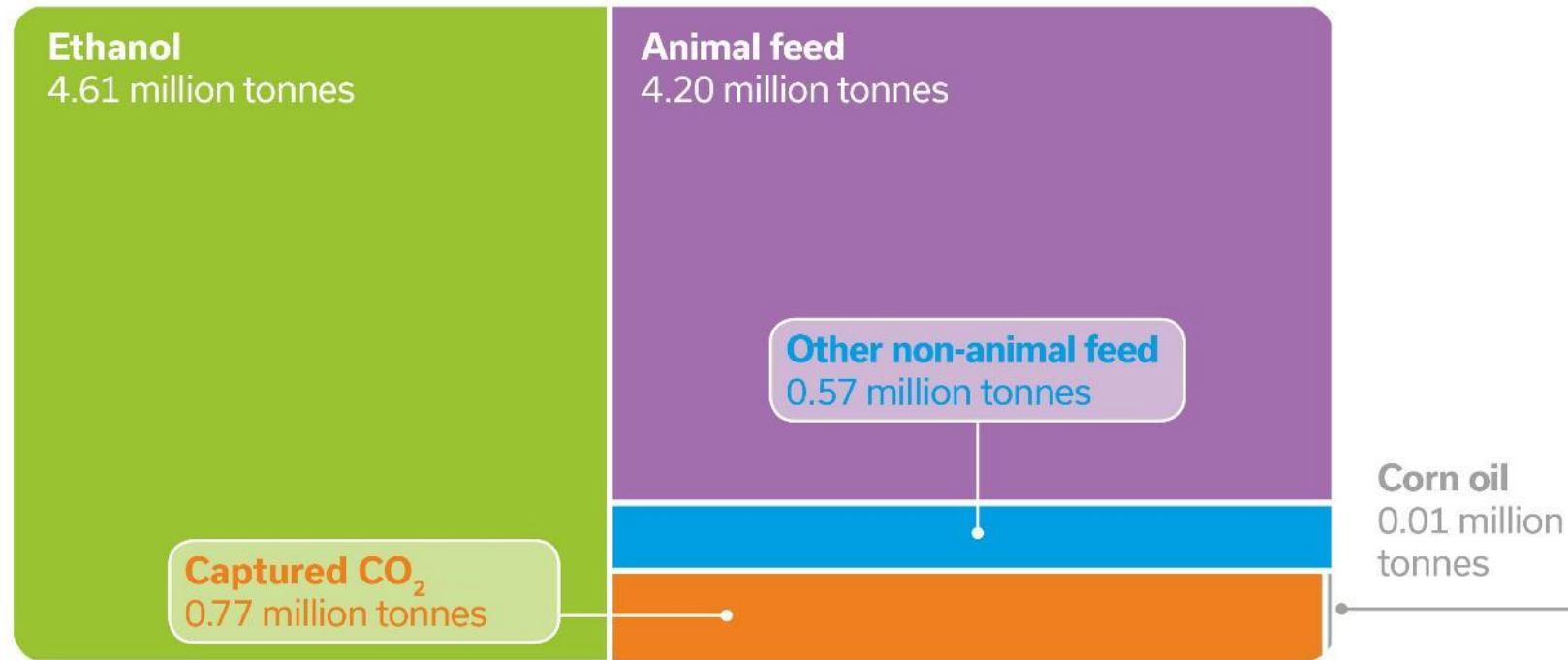


99% of all feedstock used to produce renewable ethanol by ePURE members was grown in Europe

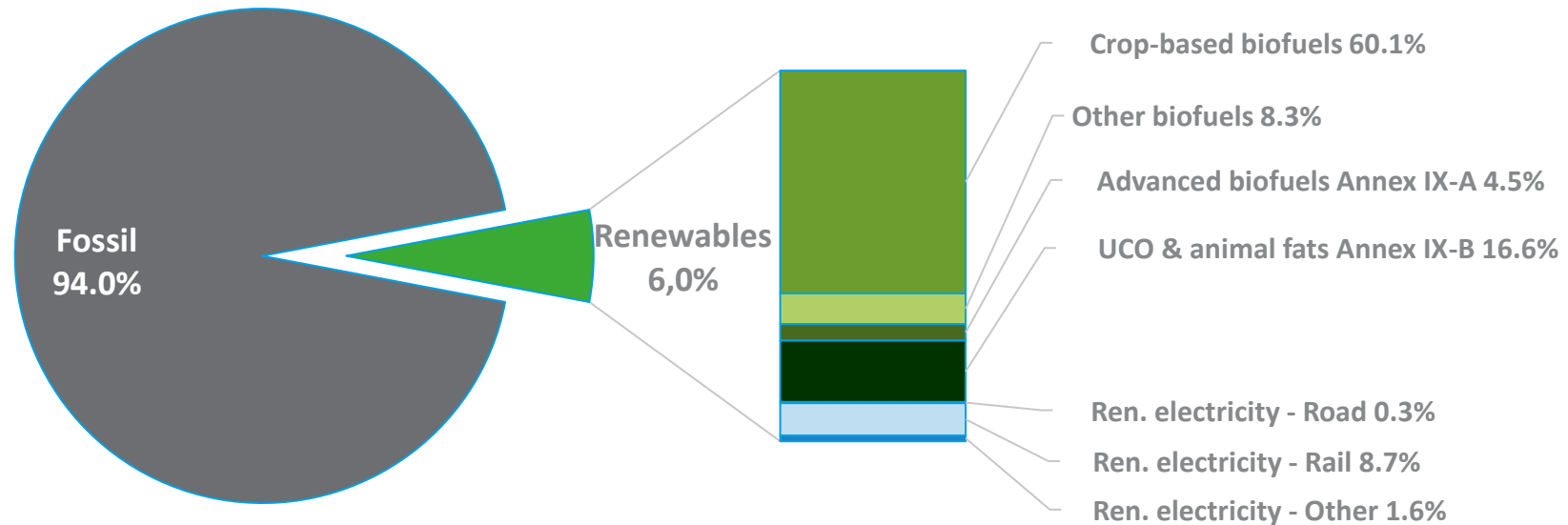


# ePURE production: More than just ethanol

Main output of EU renewable ethanol plants



# Renewables in transport Biofuels contribution



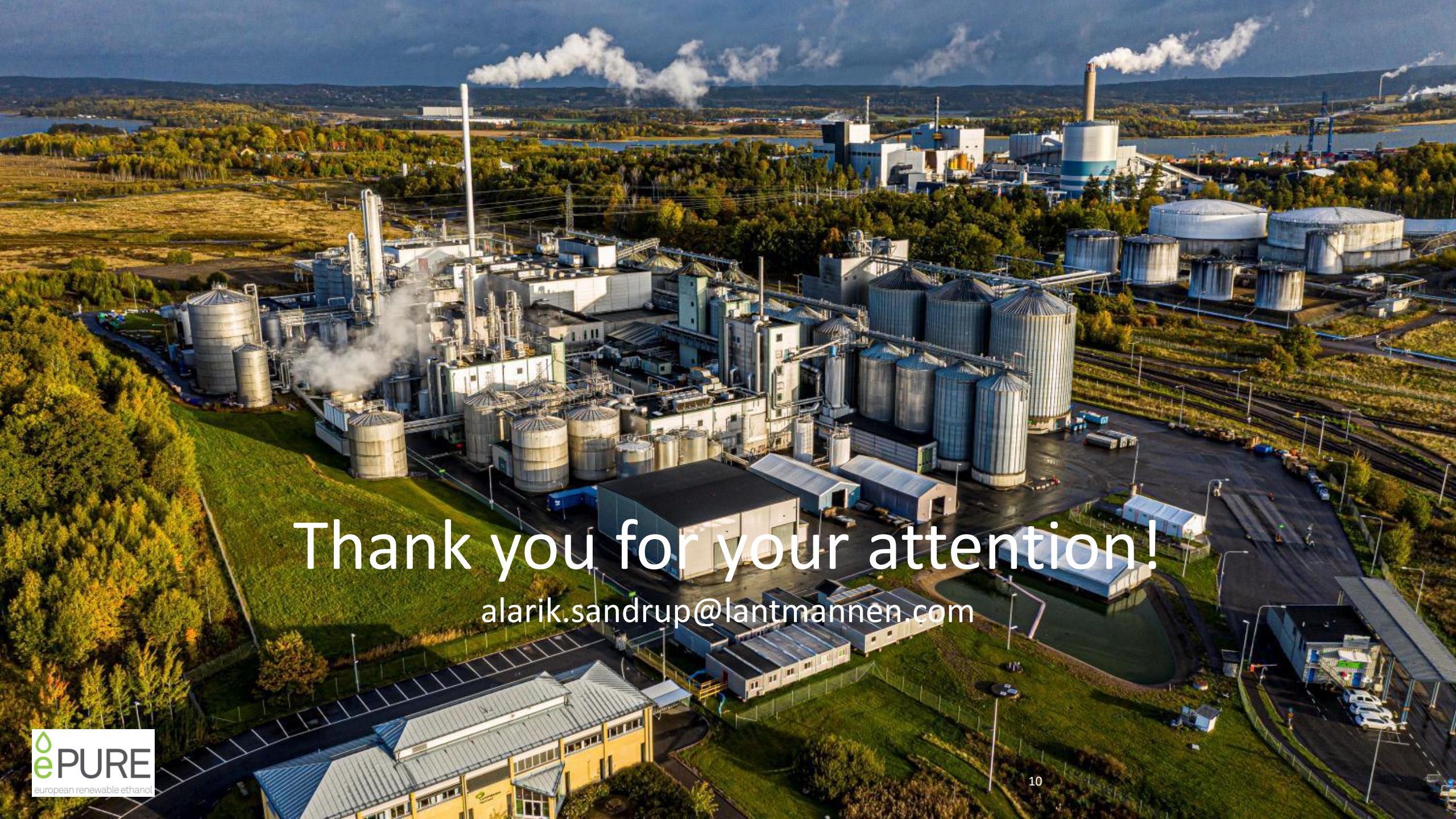
- Crop-based biofuels represent the majority of renewables in transport >60%
- All biofuels together account for over 89% of renewables in transport
- Renewable electricity is mainly used for rail transports





# Think local: Benefits of a European biorefinery approach

- Put farmers and cooperatives at the heart of the Green Deal and COVID recovery
- Ensure domestic food and energy security
- Close loop on circular economy



Thank you for your attention!

[alarik.sandrup@lantmannen.com](mailto:alarik.sandrup@lantmannen.com)